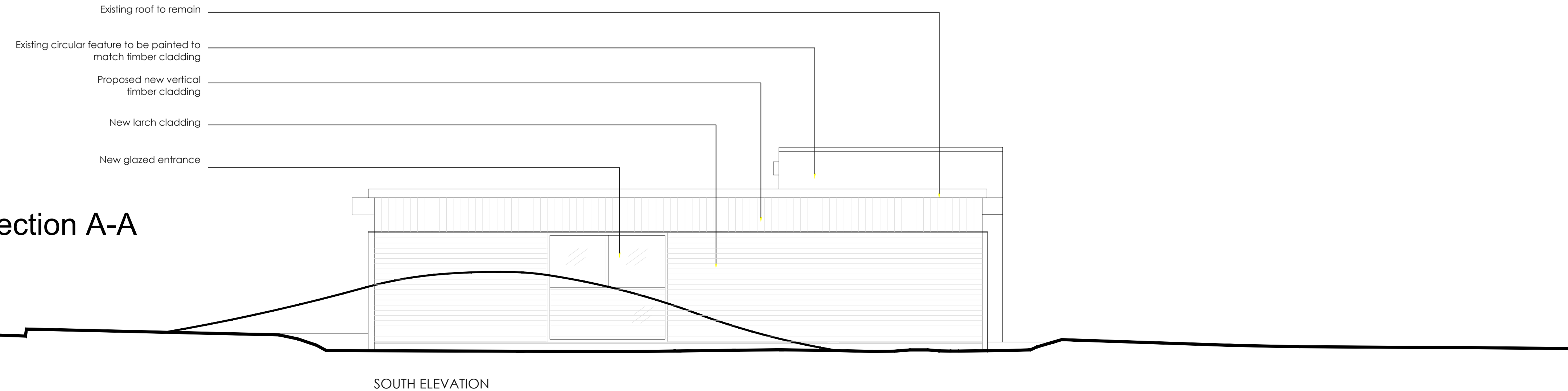
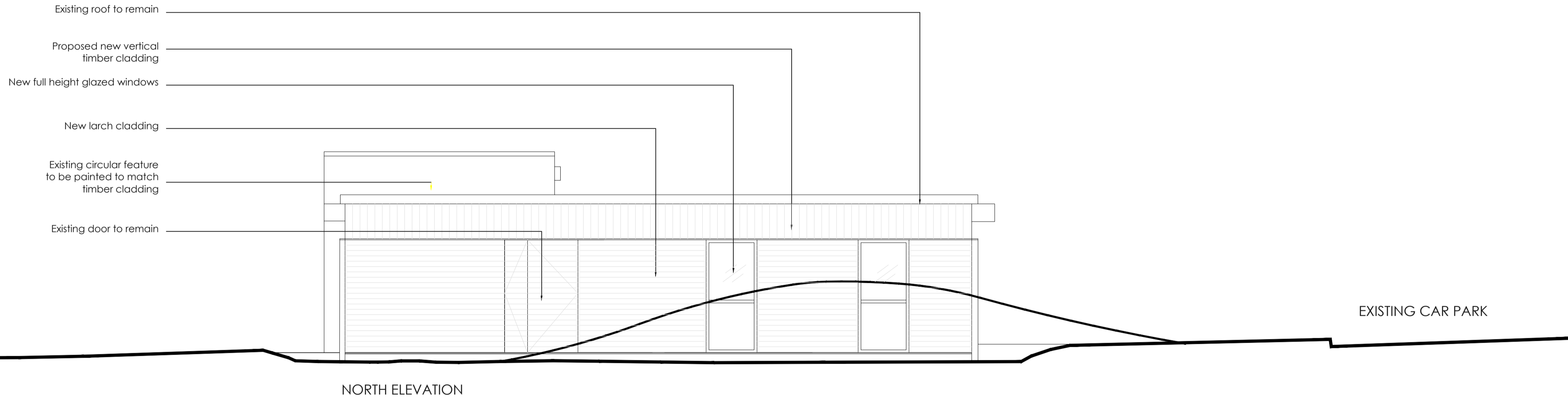
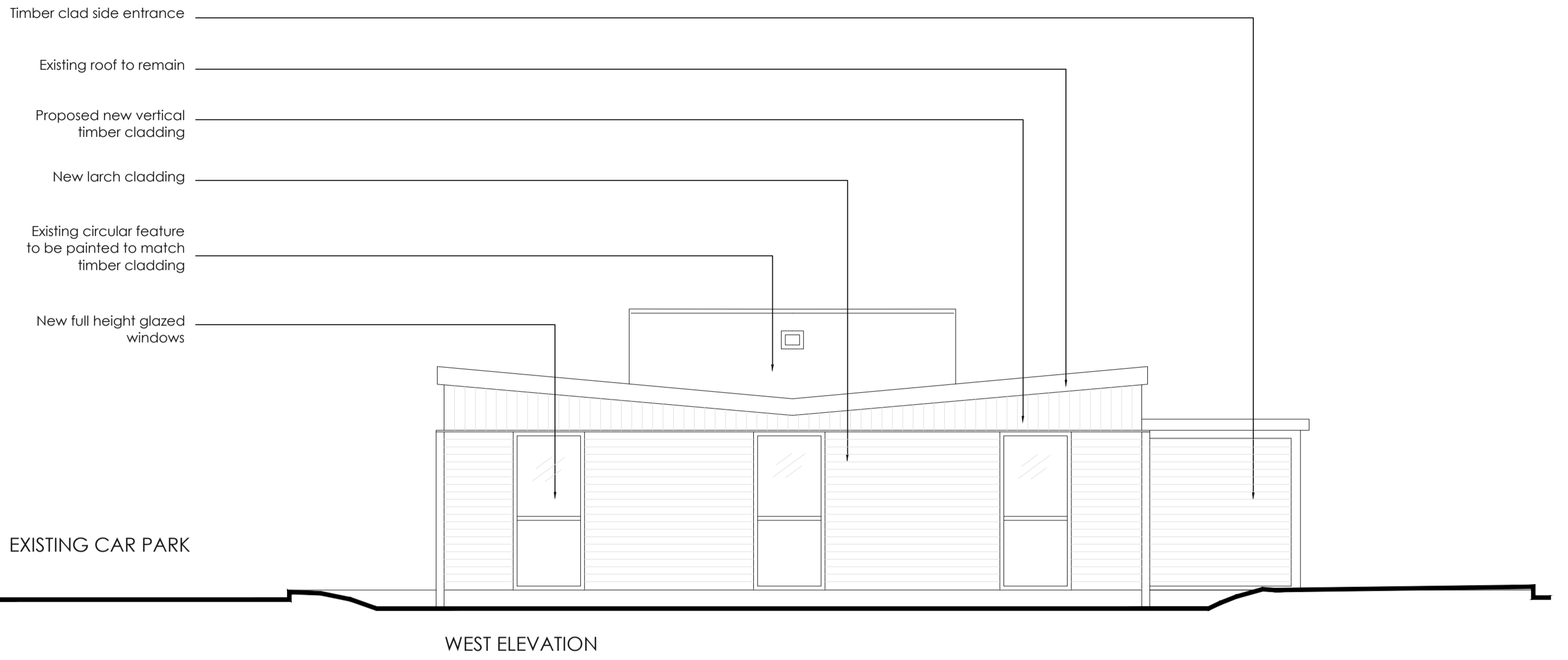


Construction staff and operatives must ensure the principal contractor has provided thorough and accurate information on all health and safety aspects relating to the designs identified on this drawing including the review of:

- Designers/contractors risk assessments
- Method statements
- Permit to work
- Pre construction information

The designers note that the following health and safety risks relating to this drawing have not been eliminated during the design process:

ref	residual risk



Common Room Section A-A
Scale - 1:50

revision	date	by	chk

All dimensions to be verified on site and the Architect informed of any discrepancy. All drawings and specifications should be read in conjunction with the Health and Safety Plan; all conflicts should be reported to the appointed Principal Designer.
This drawing is the Property of Bowman Riley Architects Limited ©
DO NOT SCALE FROM THIS DRAWING

- preliminary
- planning
- comment
- tender
- construction
- record

BOWMAN RILEY ARCHITECTS
Wellington House · Otley St · Skipton · N Yorkshire · BD23 1EL
Leeds | London | Skipton
01759 795611 · www.bowmanriley.com

BINGLEY TOWN COUNCIL			
drawn by	checked by	date	scale @ A1
RS	DG	JUNE 2019	1:50
PUBLIC TOILETS, MYRTLE PLACE BINGLEY			
PROPOSED ELEVATIONS			
project number	drawing number	revision	
2043	SK03	A	

cat reference: U1_P-S2043 - Bingley Toilets - PM2043 - Project Files Design and Specification Myrtle Place Bingley construction.org